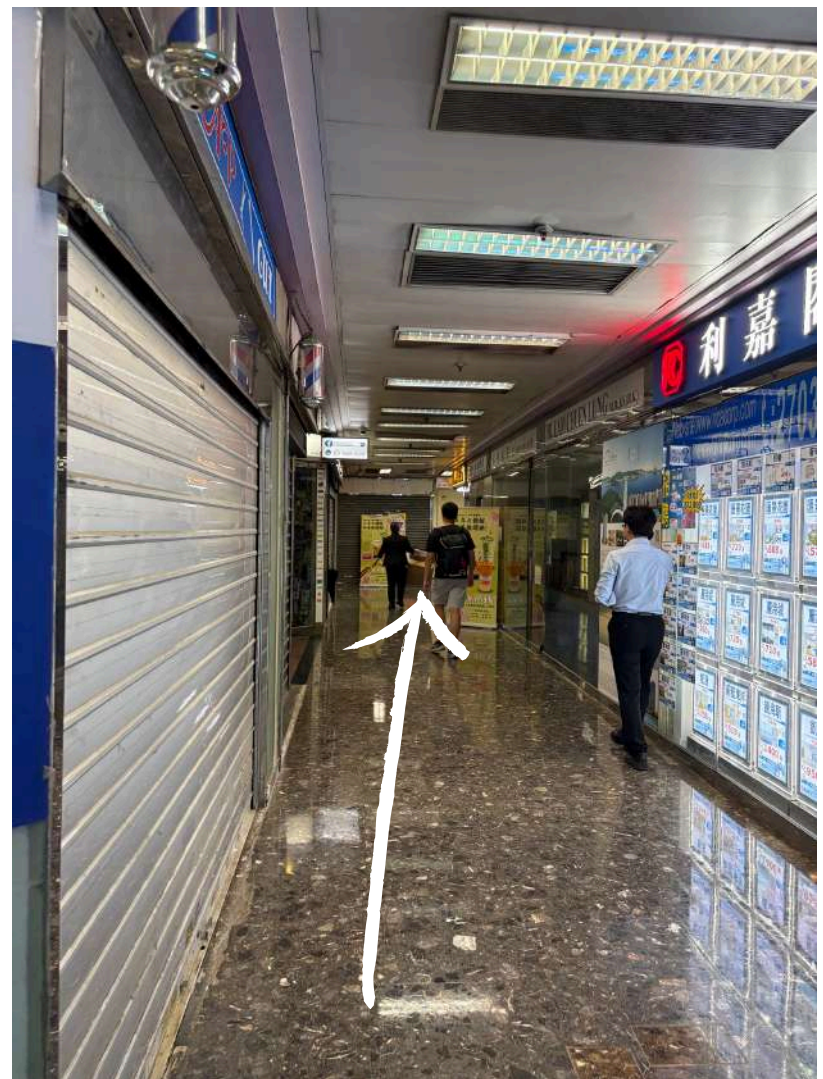


Wheelchair Accessible route - from MTR to CTY

1. Upon arriving at exit A , head towards Yamazaki bakery and turn right



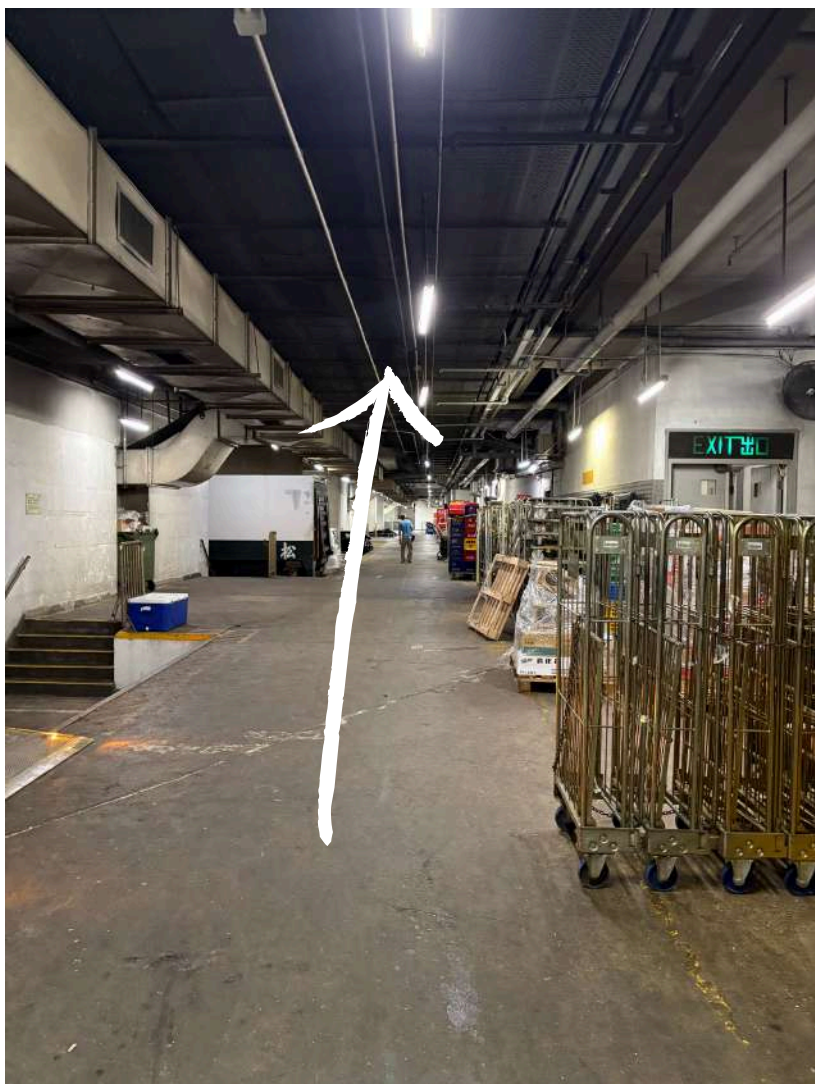
2. Enter through this door for lift



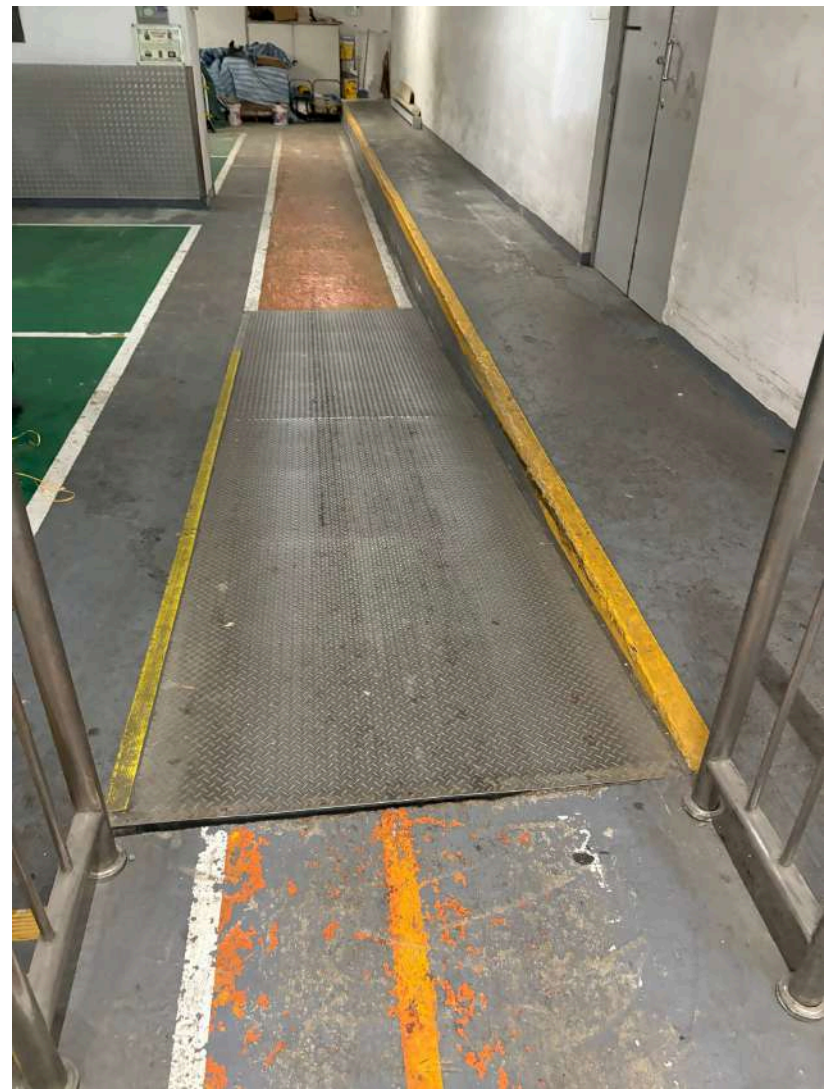
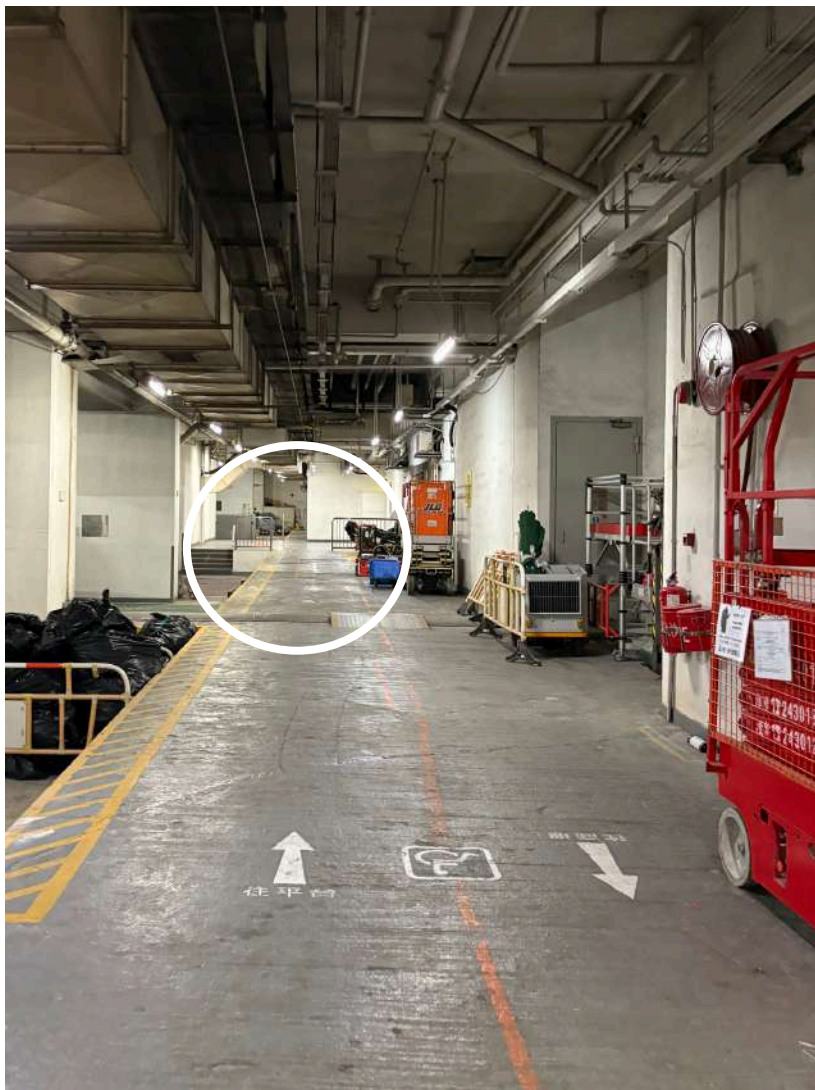
3.Press “L6” to head up



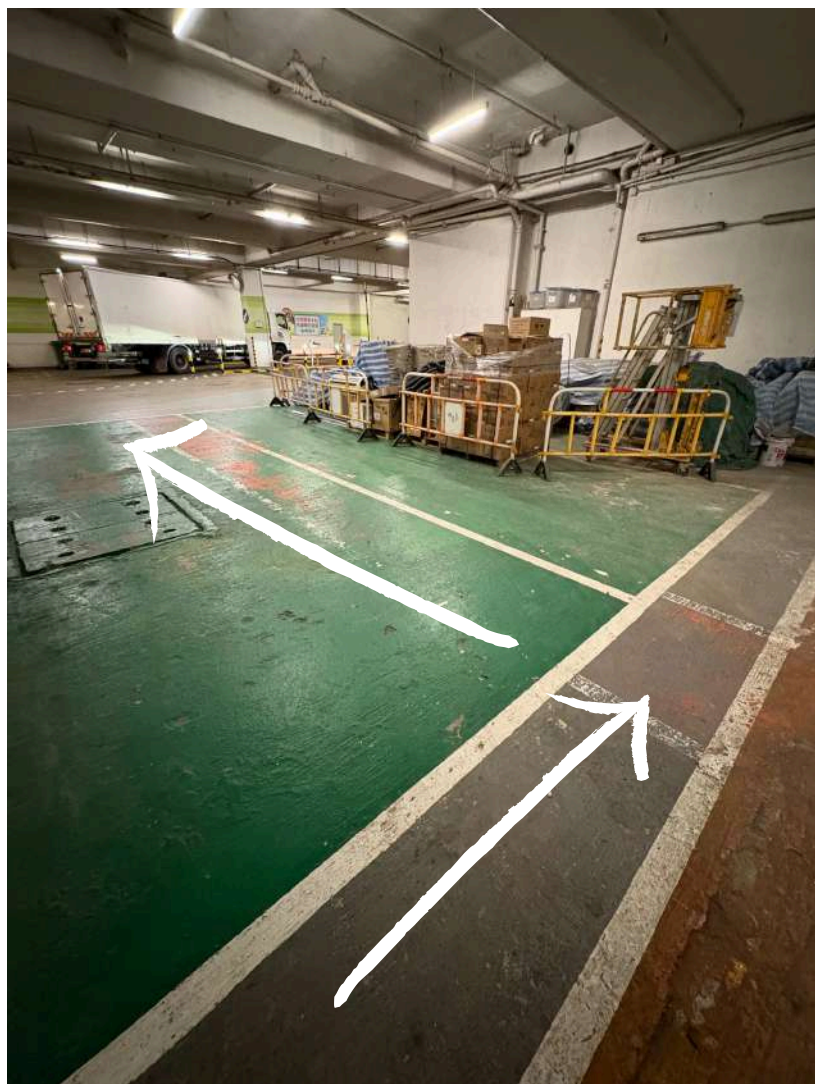
4.Turn right after exiting the lift , and walk along the orange route



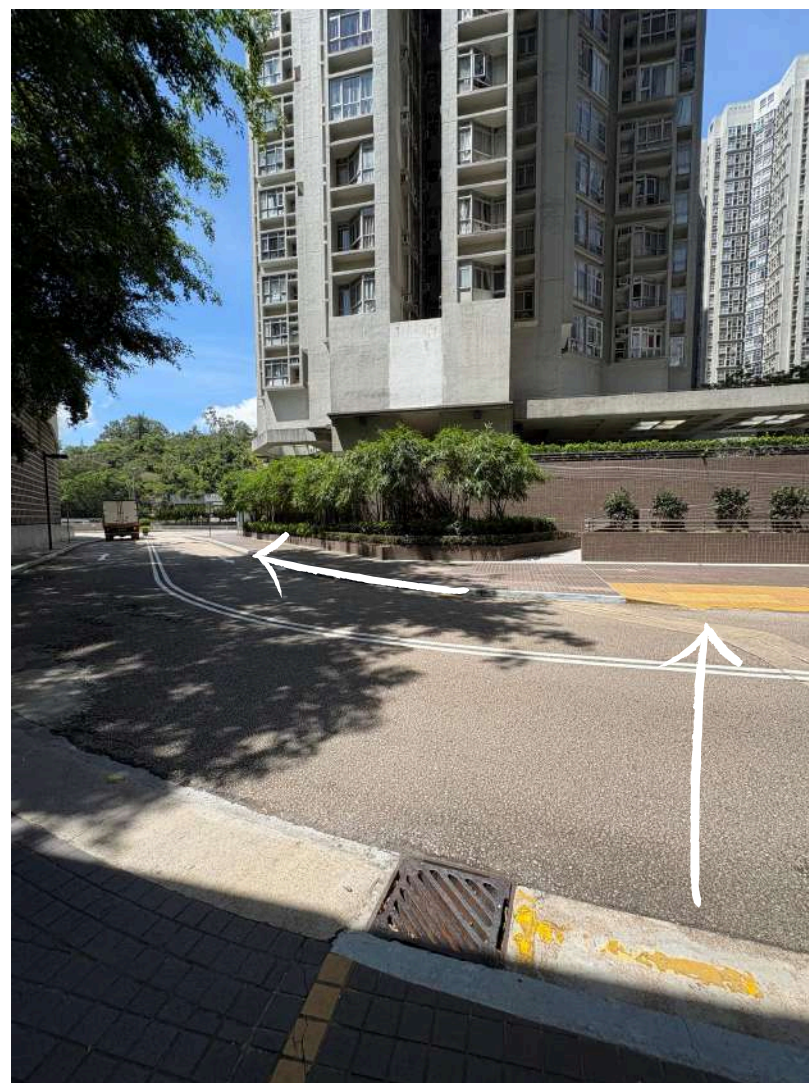
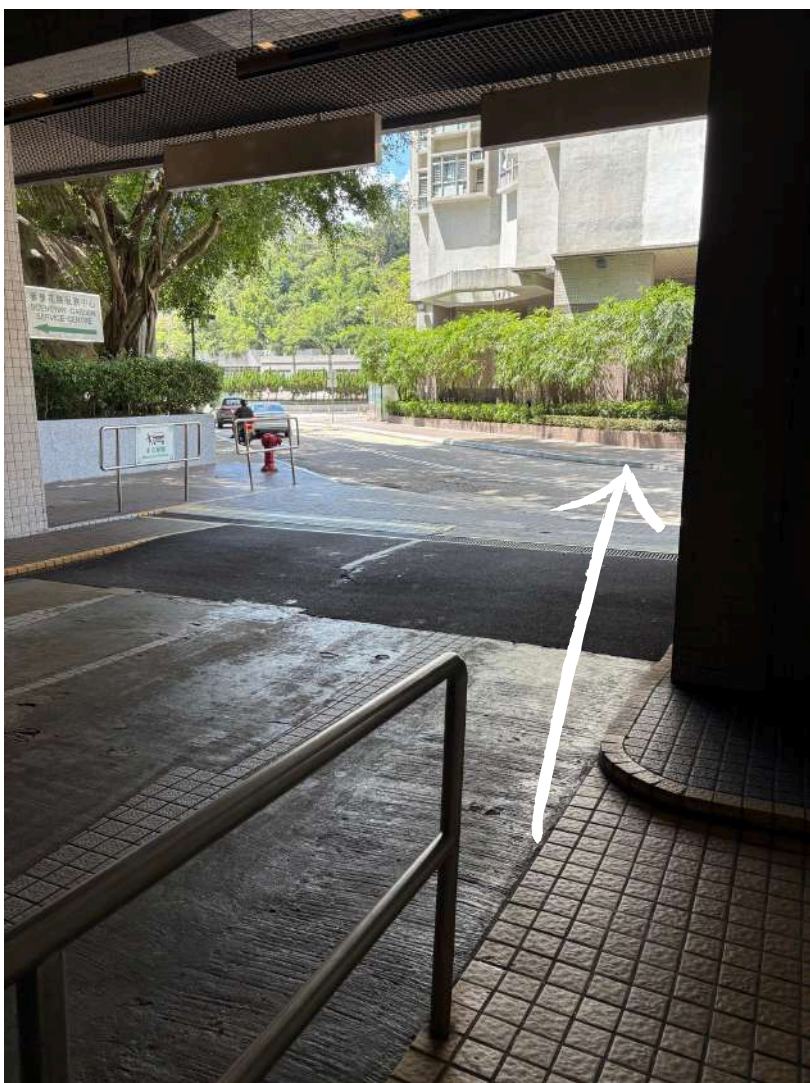
5. Continue onwards



6. Exit the car park in the direction of the arrow



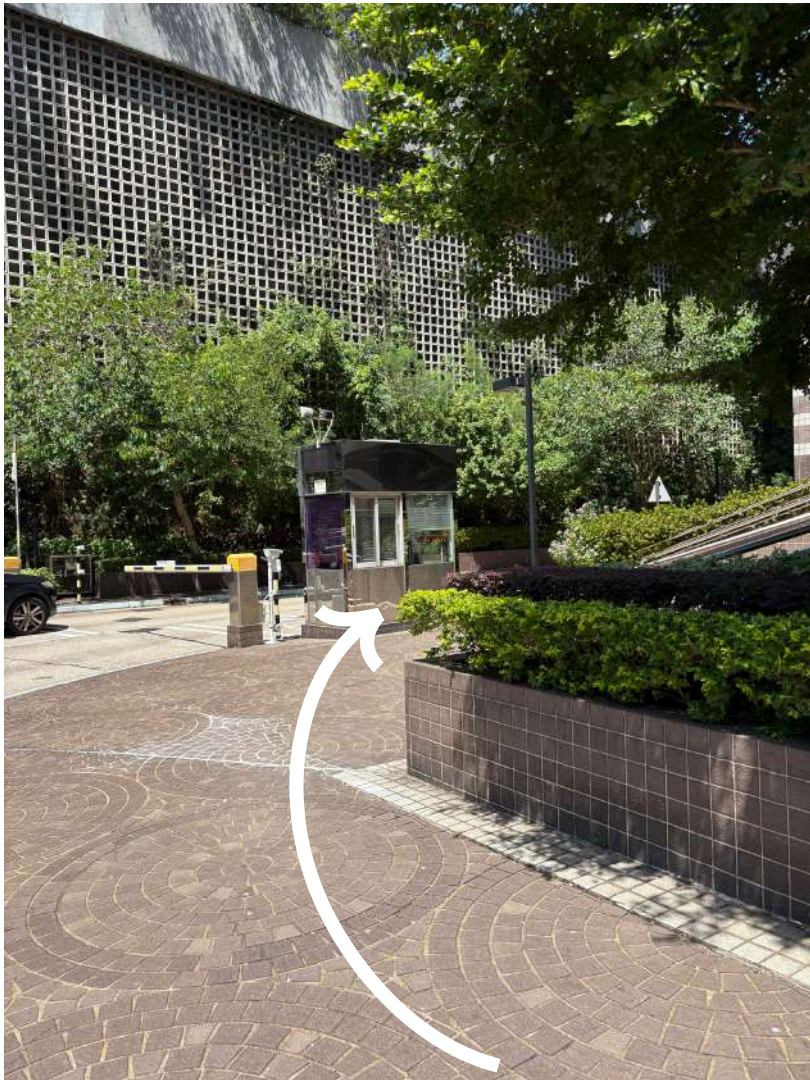
7. Cross the road after leaving the car park, and turn left



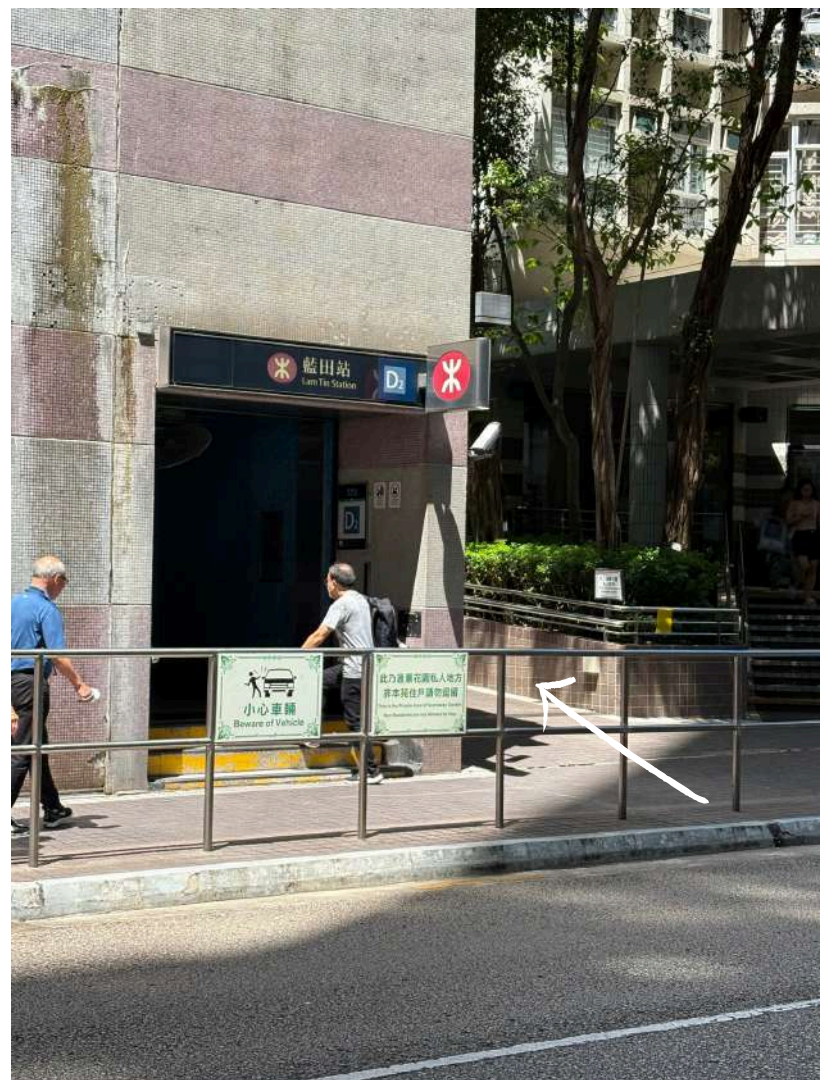
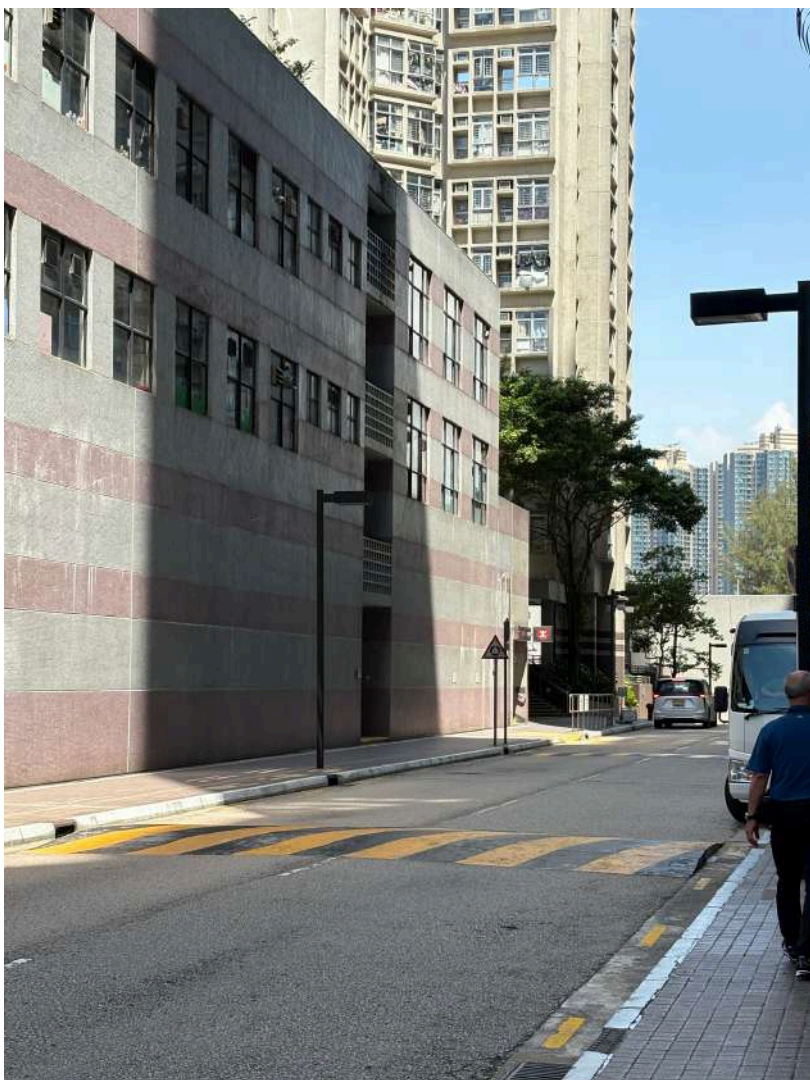
8. Walk by the fountain on your right and continue forwards



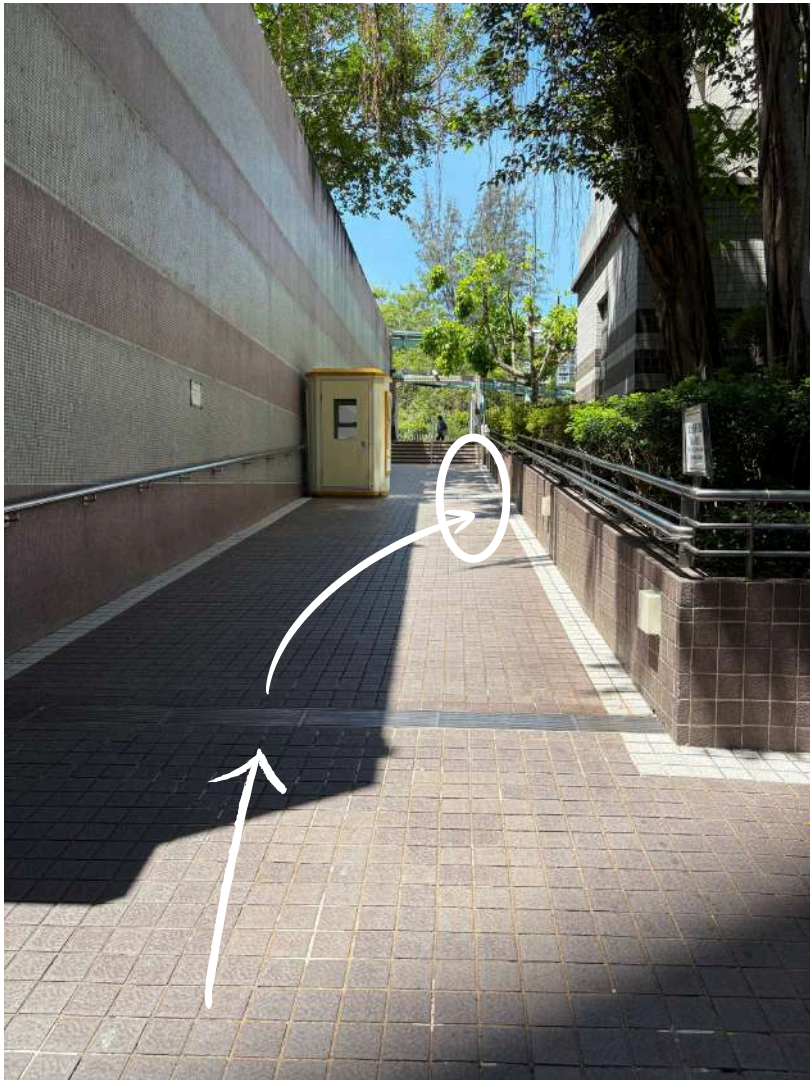
9. Turn right upon seeing the security booth, and continue onwards



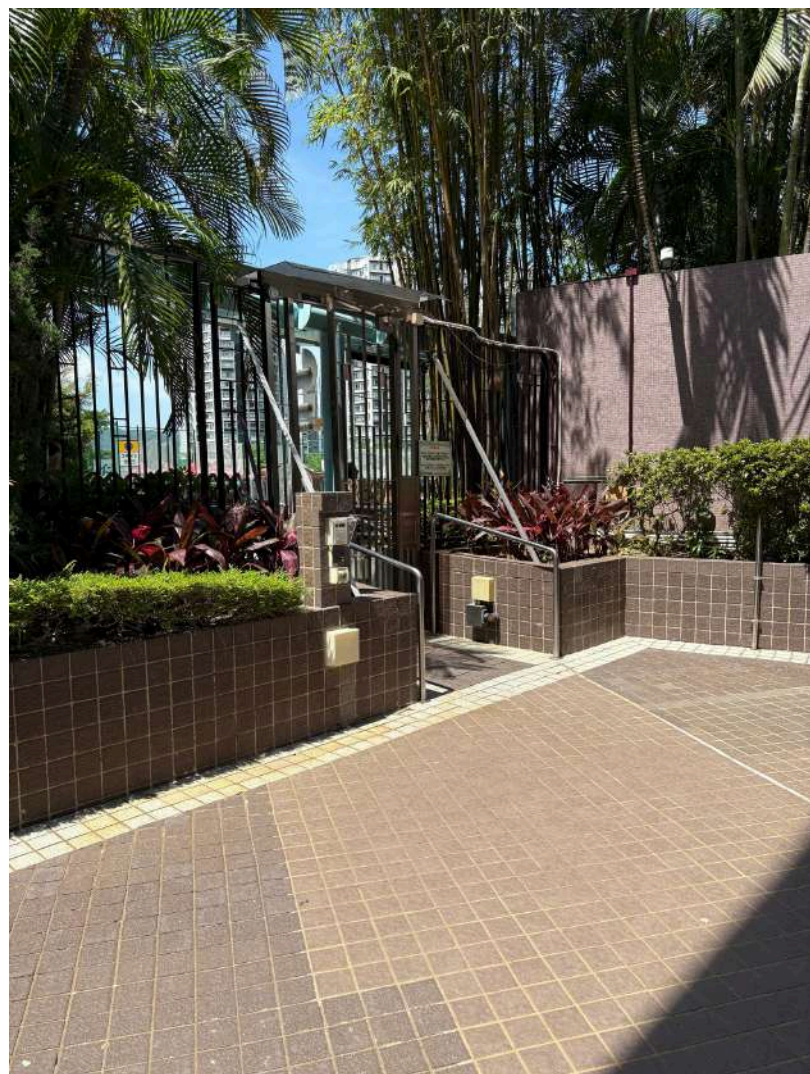
10. Go straight until you see MTR exit D2, turn right and take the path



11. Turn right at the end of the path



12. Exit through the gate



13. Turn right and walk down Sin Fat Road in the direction of Hong Kong Red Cross Princess Alexandra School